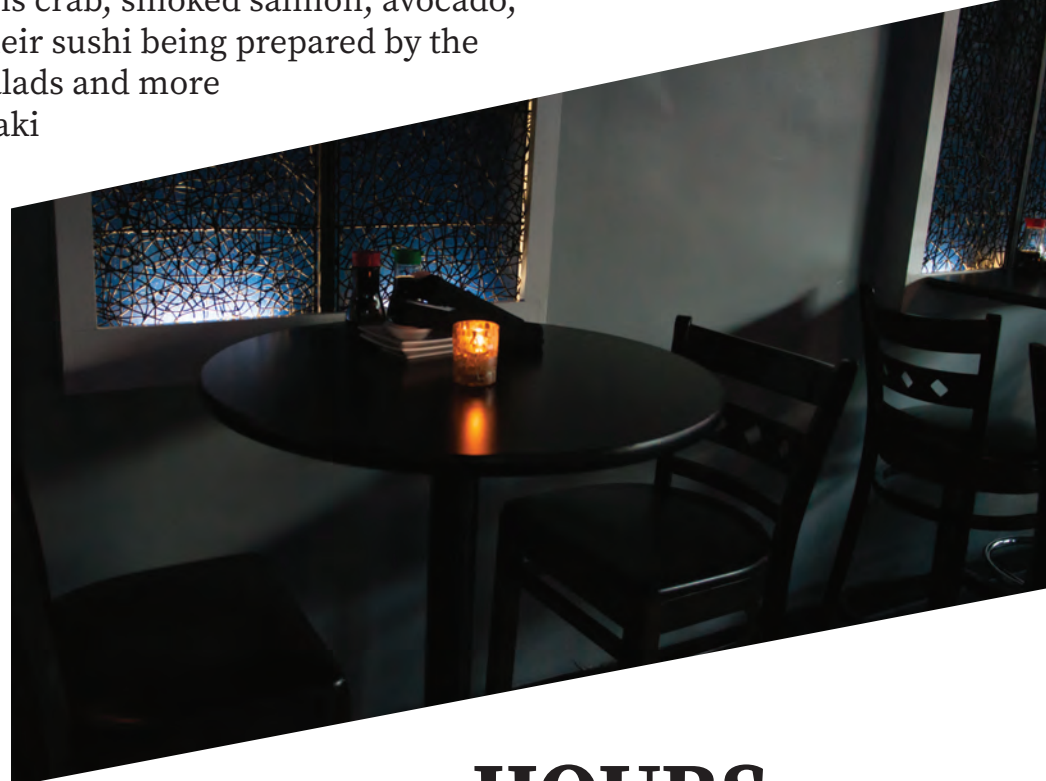
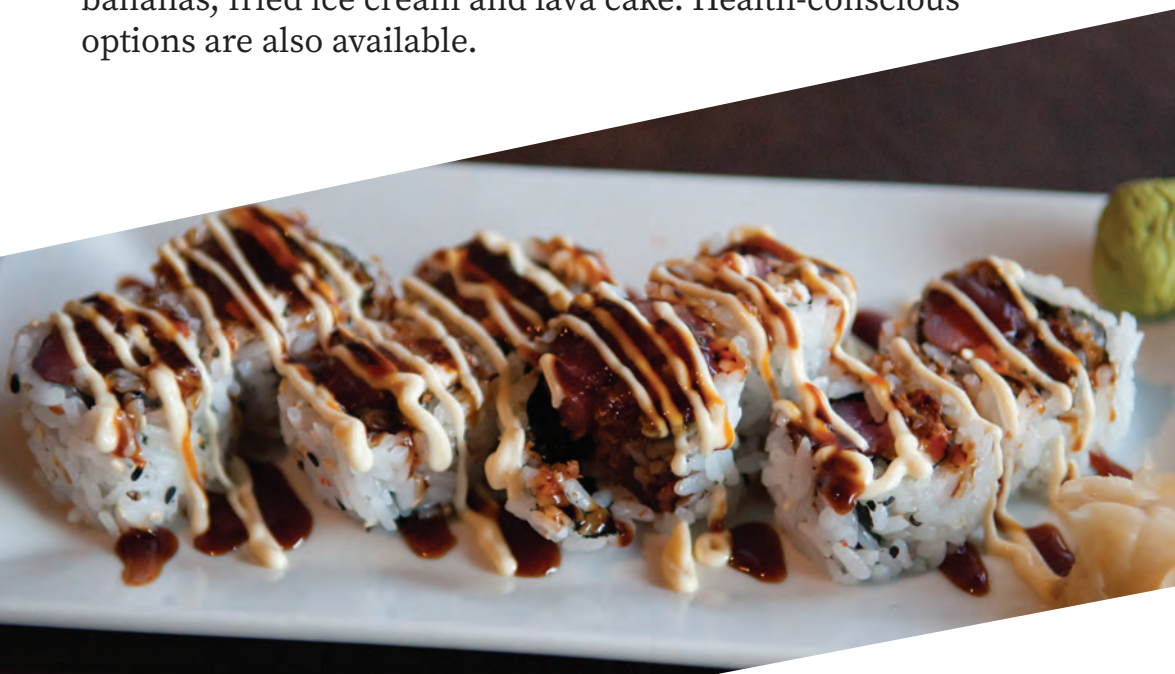


Tsunami

Anna Paputsa

Lovers of sushi are guaranteed quality seafood at Tsunami in downtown Greenville. Right around the corner from Marble Slab at 106 E. North St., Tsunami offers over 100 varieties of sushi rolls to their customers. Different kinds of sushi include the salmon, cucumber, crab, tuna and shrimp roll, among others. One of the more popular rolls is the city roll, which contains crab, smoked salmon, avocado, cream cheese and spicy mayo served with asparagus. Guests can watch their sushi being prepared by the cooks at the open sushi bar. For those less adventurous, Tsunami offers salads and more traditional entrees such as rice and vegetables served with choice of teriyaki chicken, shrimp or beef. Desserts include fried cheesecake, fried bananas, fried ice cream and lava cake. Health-conscious options are also available.



HOURS

Monday-Friday Lunch
11:30 p.m. - 2 p.m.

Monday-Wednesday Dinner
5 p.m. - 11 p.m.

Thursday-Saturday
5 p.m. - midnight

Sunday
5:30 p.m. - 10 p.m.

